



FOR YOU
YOUR EVERYTHING STORE



Franchise Opportunity



Your Business.



Our System.



Guaranteed Growth.



foryou_mart



foryou_mart



foryou_mart



@foryoumart2859



foryou_mart

Join the Fastest Growing Supermarket Chain of Odisha



FOR YOU
YOUR EVERYTHING STORE



20+ Successful Stores Across Odisha
Proven FOCO & FOFO Models
Low Investment High Return

About Us

Welcome to FOR YOU MART, your trusted supermarket brand since 2021.

What started, as a vision of our founder Mr. Nigamananda Jena to transform grocery shopping – has today grown into a strong retail network.

Today we proudly operate:

- 20+ Successful Stores Across Odisha
- 100+ Skilled Team Members
- Thousands of Daily Shoppers

Providing high-quality products at competitive prices, backed with exceptional service.

Mission

To create a modern and welcoming shopping environment, offering everything under one roof – with premium quality, unbeatable prices, and strong community connection.

values

- Quality & Freshness Always
- Customer-First Approach
- Continuous Improvement
- Transparency & Trust

Our Stores



FOR YOU
YOUR EVERYTHING STORE



BHADRAK



ANANDAPUR



CHHENAPADI



SUNDARAPAL



KESHADURAPAL



BONTH



BELABAHALI



GHASIPURA

WHY CHOOSE US ?

- ✓ Proven Business Model
- ✓ Trusted Brand with Rapid Expansion
- ✓ Complete Setup, Training & Operations Support
- ✓ Centralized Procurement & Supply Chain
- ✓ Transparent Billing & ERP System
- ✓ Marketing & Promotions by Company
- ✓ Attractive ROI with Steady Growth

OUR DAILY OFFERS FOR CUSTOMER?



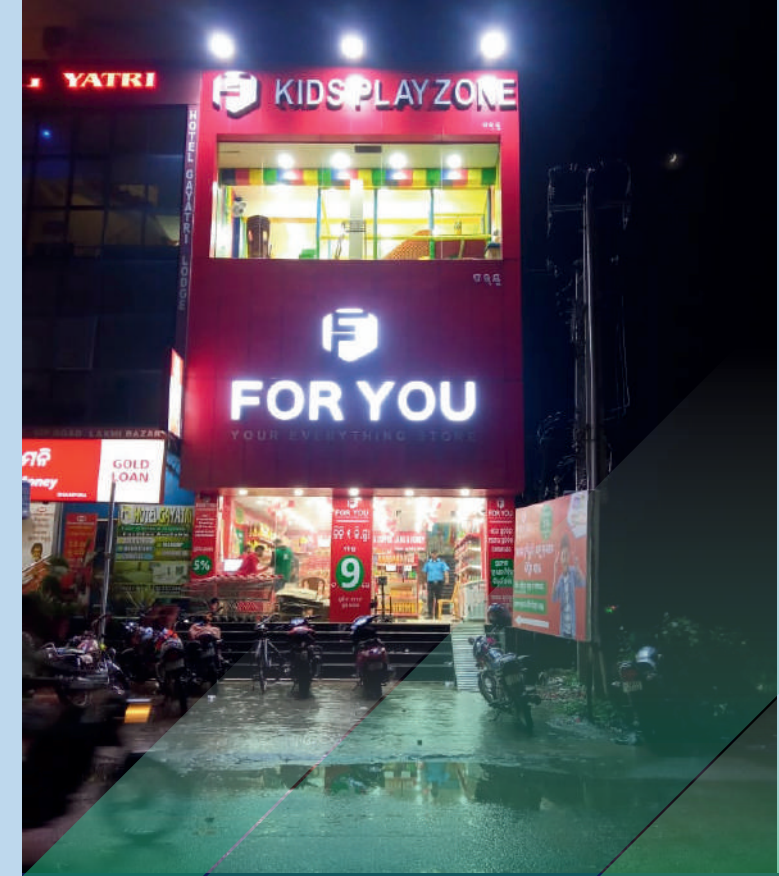
**1KG FOR YOU SUGAR
ON EVERY
PURCHASE OF RS.1499**



**UPTO 70% OFF ON
EVERY PURCHASE**



**REWARD POINTS ON
EVERY PURCHASE**



CREATE YOUR STUNNING OUTLET

**LET US HELP YOU CREATE A
BEAUTIFUL AND FUNCTIONAL
ENVIRONMENT THAT
CUSTOMERS LOVE TO SHOP IN.**



BRANDS ASSOCIATION WITH

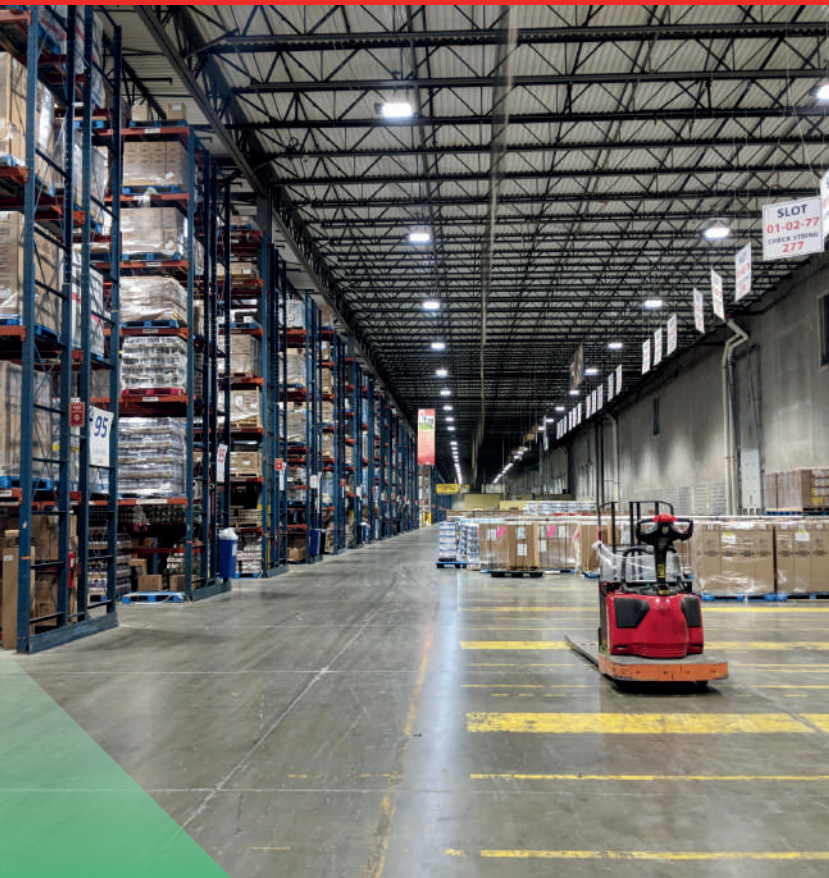


& MORE.....

WAREHOUSE

Our strong warehouse network ensures:

- Smooth daily operations
- Balanced demand–supply
- Fast replenishment
- Consistent product availability across stores



PRODUCT SEGMENTATION



HIGH PERFORMING MARKETING STRATEGY



We provide high quality product at very low price

Monthly Super Savings Week on Every Month (4th to 10th)

We provide offers when customer need products

Sugar 1kg at just Rs.9 on every purchase of Rs.1499

Rewards Points for customer on Every Purchase

Special Coupons and Discounts to customers on bulk Purchasing

Performance-based incentives

Festival offers and mega sales

Strong digital & offline promotions



INTERIOR PROCEDURE

1

STANDARDISED
INTERIOR
LAYOUT

2

TIME
BOUND
EXECUTION
PROGRAM

3

QUALITY
CONTROL
AUDIT

4

EXECUTION
WITHIN 5 DAYS
OF THE
FRANCHISE
AGREEMENT

5

WITHIN 30
DAYS BEFORE
STORE
OPENING

PURCHASE-SELL FLOW MAP

OTHER COMPANY



FOR YOU YOUR EVERYTHING STORE

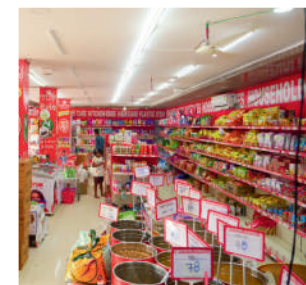
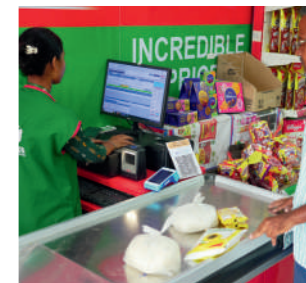




**FRANCHISE OWNED
FRANCHISE OPERATED**

BORNE BY FRANCHISE BY FRANCHISE

Area/Size.....	1000 sqft to 20,000 sqft
Software Fee.....	Rs.40,000/- per Logins
Product Cost	Rs.2000/- per sqft approx
Interior as per the company's layout.....	Rs.1200/- per sqft Approx
Investment.....	RS.18,00,000 to RS.30,00,000
Royalty.....	1%
Franchise fee.....	2,20,000/-+GST



**Staff training and jacket
provided by The Company.**

(T&C APPLY)

FRANCHISE FOFO MODEL



CALCULATION OF INCOME FROM FOFO MODEL

PRODUCT

Grocery & Staples, Dry Foods, Bath & Body Care, Bakery, Toys, Personal Care, Beverages, Health & Wellness, Frozen Food, Ice Cream And More..

CALCULATION OF INCOME : PROJECTION

Lets Take an example of 500 sqft Area of FOFO Model Franchise:

Per Month Approximate Sales Rs.15 Lac (Per Day Rs.50000 average Sale)

Average Margin on Monthly Sales is 20%= Total Income Rs.3,00,000 Per Month

**Income on total
monthly sale 20%**

**Rs. 3,00,000/-
Per Month**

COMPANY SUPPORT

Accounting support, Purchasing Support, Advertisement, News Paper Add, Social Media Add, Staff Training & Company Jacket .

INCOME

**Approximate Rs.1 to 3 Lac
Per Month**



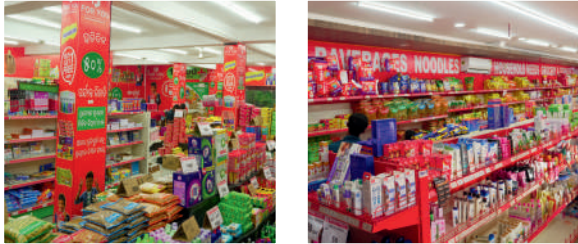
FOR YOU
YOUR EVERYTHING STORE

FOCO MODEL

**FRANCHISE OWNED
COMPANY OPERATED**

BORNE BY FRANCHISE BY FRANCHISE

Area/Size.....	1000 sqft to 20,000 sqft
Franchise Fee.....	Rs.2,20,000/- +GST
Software Fee.....	Rs.40,000/- per Logins
Product Cost	Rs.2000/- per sqft approx
Interior Cost.....	Rs.1200/- per sqft Approx
Operation Cost.....	Rs.300/- per sqft
Total Franchise Investment Cost	Set up cost Rs.3500/-
Agreement Time.....	5YEARS



Company will refund 50% of the setup cost after 5 year lock in period

COMPANY'S WORK

- The company will bear the store rent, up to a maximum of ₹100 per sq. ft.
- The company will pay the electricity bill of the supermarket franchise.
- The company will pay the salaries of all staff working in the supermarket franchise.
- The company will handle all marketing, promotion, and advertising activities to boost sales in the supermarket franchise.
- The company will display a wide range of saleable products in the store.
- The company will handle the complete interior setup of the supermarket store.



CALCULATION OF INCOME : PROJECTION

Lets Take an example of 1500 sqft Area of FOCO Model Franchise:

Per Month Approximate Sales Rs.30 Lac (Per Day Rs.100000 average Sale)

Income on total Monthly sales 5% Commission
RS.1,50,000/- Per Month

CALCULATION OF INCOME FROM FOCO MODEL

Company will pay 5% commission on total monthly sales generated in the same supermarket franchise store

**Rs. 1,50,000/-
Per Month**

Refundable amount after 5 years lock in period

Company will refund 50% of the setup cost after 5 years lock in period



We love to help you live your dreams and appreciate your interest in joining the “FOR YOU” Family

 7854989899

 info@foryousupermarket.com

 www.foryousupermarket.com