



FOR YOU

YOUR EVERYTHING STORE

About Us

"Welcome to FOR YOU, your trusted supermarket.

Since 2021, we've been dedicated to providing our community with:

- Fresh, high-quality products
- Exceptional customer service
- Competitive prices

Our Story:

"FOR YOU" was founded by Nigamananda Jena , driven by a passion for delivering excellence in grocery shopping. Today, we operate 6 locations, employing 52 team members and serving thousands of customers daily.

Mission:

To create a welcoming shopping environment, and provide everything under a roof with best quality and unbeatable price, fostering strong community ties and customer loyalty.

Values:

- Quality and freshness guaranteed
- Customer-centric approach
- Continuous improvement

Our Stores



Contact Us



Toll Free No. 18003130399



7854989899 / 9658515157/ 7749939957



info@foryousupermarket.com

WHY CHOOSE US ?

- ✓ Experienced and knowledgeable team of professionals
- ✓ Very Less Setup cost than other Company.
- ✓ No hidden charges and on Time Support
- ✓ Competitive pricing and flexible payment options
- ✓ Attention to detail and commitment to customer satisfaction



OUR DAILY OFFERS FOR CUSTOMER?



ONLY
RS. 9

**1KG FOR YOU SUGAR
ON EVERY
PURCHASE OF RS.1499**

GET UPTO
50%
OFF



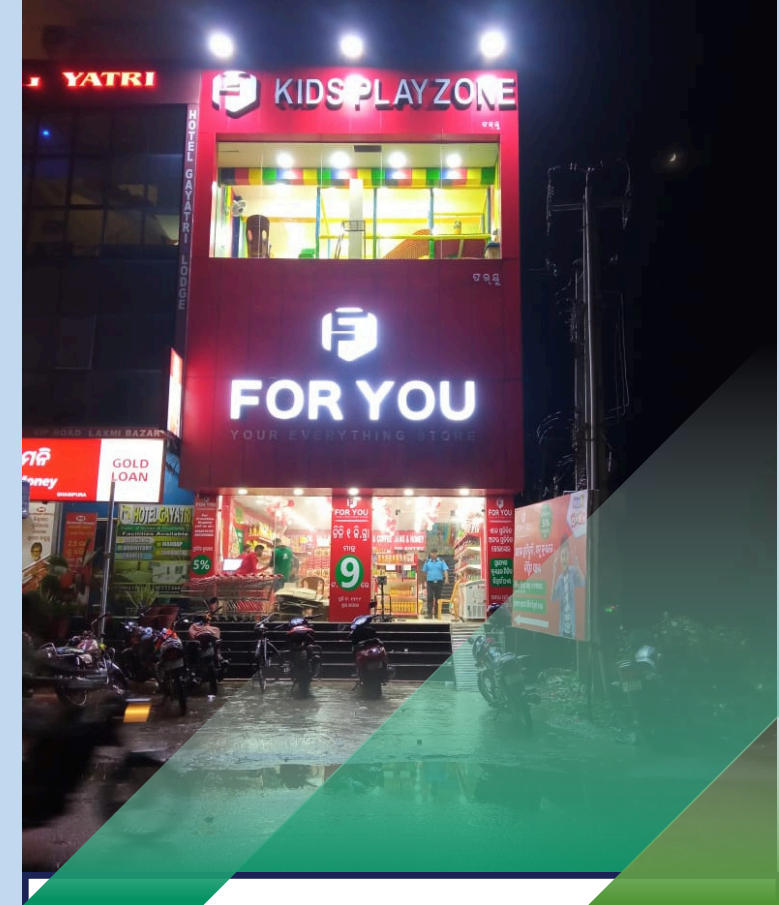
**UPTO 50% OFF ON
EVERY PURCHASE**



Reward Points

GET
REWARD
POINT

**REWARD POINTS ON
EVERY PURCHASE**



CREATE YOUR STUNNING OUTLET

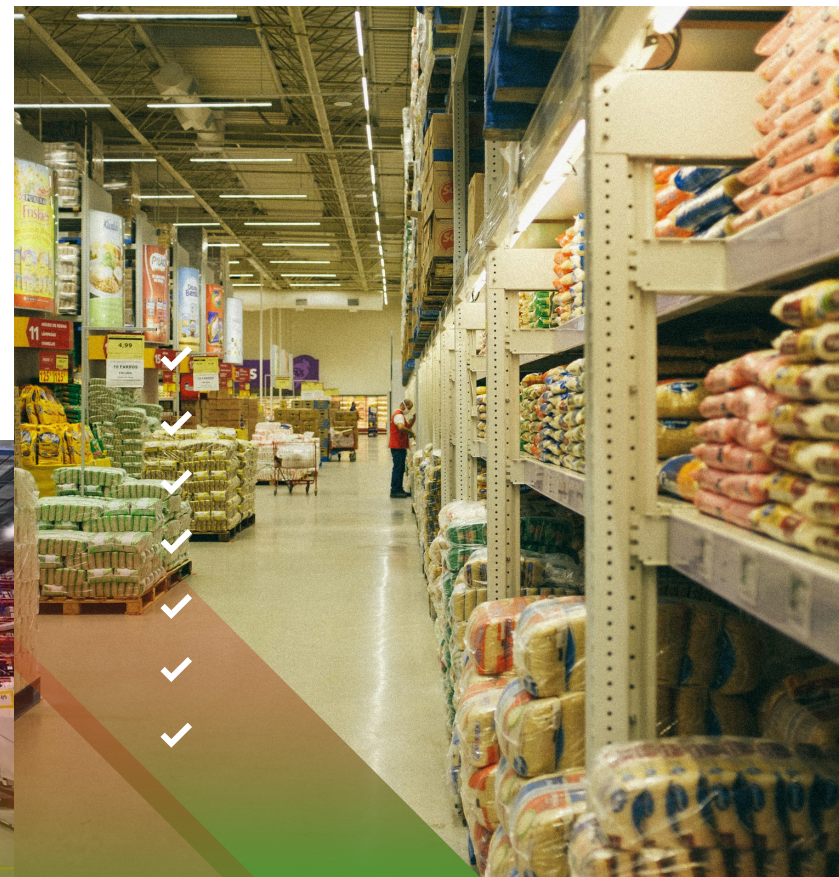
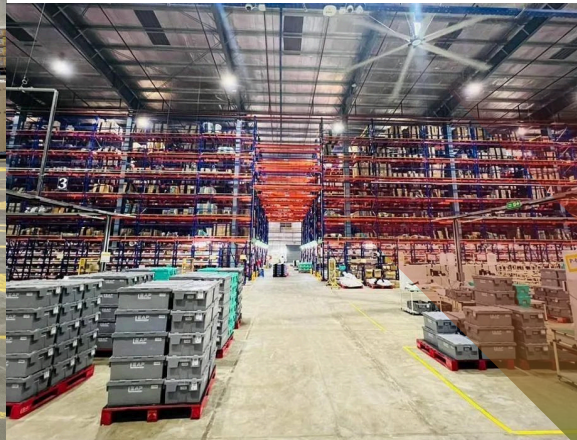
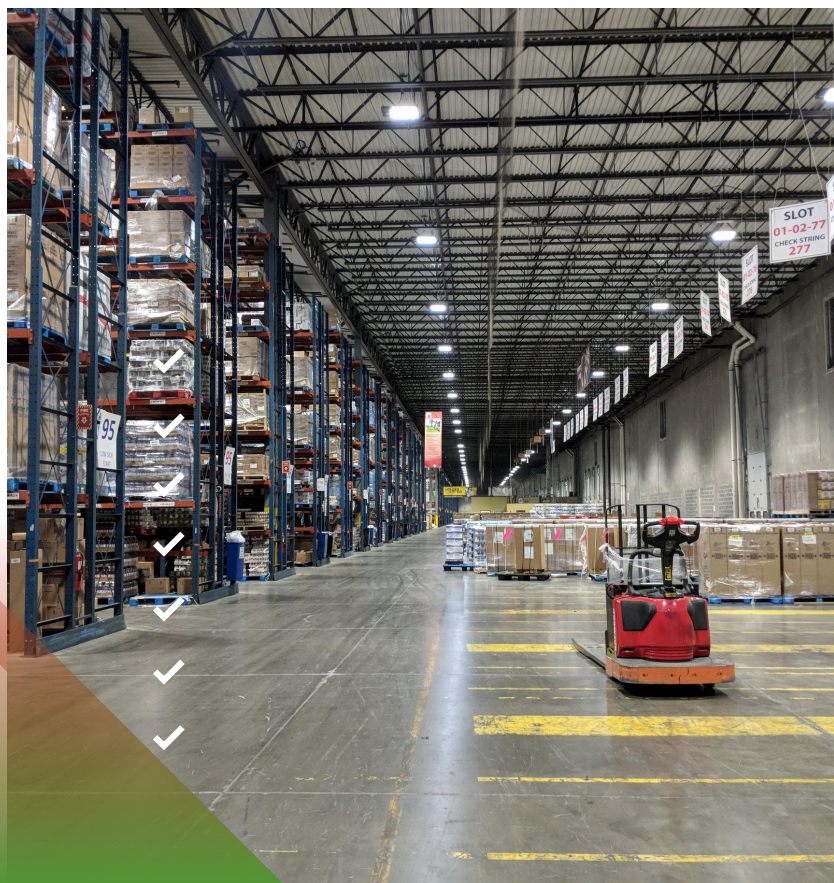
**LET US HELP YOU CREATE A
BEAUTIFUL AND FUNCTIONAL
ENVIRONMENT THAT CUSTOMER
LOVE TO SHOPING.**

MAJOR BRANDS ASSOCIATION



WARE HOUSE

Our wide network of ware houses have made operations smooth and easy in the supply chain. With increased demand we have balanced with equal supply to our all stores.



PRODUCT SEGMENTATION



HIGH PERFORMING MARKETING STRATEGY



We provide high quality product at very low price.

Super Savings Week 7 days Special Offer on Every Month(4th-10th)

We provide offers when customer need products.

Sugar 1kg at just Rs.9 on every purchase of Rs.1499.

Rewards Points for customer on Every Purchase.

Special Coupons and Discounts to customers on bulk Purchasing.

Incentive Based on performance for boost sales.

Special Festive Offers and Promotions.

Digital and Physical Marketing for boost sales.



INTERIOR PROCEDURE

1

**A
STANDARDISED
INTERIOR
LAYOUT**

2

**A TIME
BOUND
EXECUTION
PROGRAM**

3

**QUALITY
CONTROL
AUDIT**

4

**EXECUTION
WITHIN 5DAYS
OF FRANCHISE
AGREEMENT**

5

**30 DAYS TO
STORE
OPENING**

PURCHASE-SALE MAP

OTHER COMPANY





FOR YOU

YOUR EVERYTHING STORE

Franchise Owened, Franchise Operated

FRANCHISE FOFO MODEL

OUTLET STORES

OTHER COMPANY



BEAR BY FRANCHISE

Area/Size.....

500 sqft to 10,000 sqft

500 sqft to 15,000 sqft

Franchise Fee.....

Rs.2,75,000/- + GST

Rs.1,25,000/- + GST

Software Fee.....

Rs.55,000/- per Logins

Rs.30,000/- per Logins

Product Cost

Rs.1500/- per sqft approx

Rs.1400/- per sqft approx

Interior According To Company's Layout...

Rs.1200/- per sqft Approx

Rs.1100/- per sqft Approx

2 Security Deposit Undated Cheque.....

Rs.5,00,000/- each

Rs.3,00,000/- each

FRANCHISE FOFO MODEL

PRODUCT

GROCEY&STAPLES,FROOTS&VEGETABLES,DRYFOODS,BATH&BODY,CARE,BAKERY,TOYS,PERSONALCARE, BEVERAGES,VEGETABLES,FROZEN FOOD,ICE CREAM AND MORE.....

COMPANY SUPPORT

Accounting support,
Purchasing
Support,Advertisement, News
Paper Ad, Social Media Ad,Staff
Training, Company Jacket and
One Store Manager Salary

CALCULATION OF INCOME : PROJECTION

Lets Take an example of
500 sqft Area of FOFO
Model Franchise:

Per Month Approximate
Sales Rs.15 Lac (Per Day
Rs.50000 average Sale)

Average Margin on Monthly
Sales is 20%= Total Income
Rs.3,00,000 Per Month

**Franchise will Pay 2% Royalty
to Company of Monthly Sale
on Every Month**

CALCULATION OF INCOME FROM FOFO MODEL

**Income on total monthly
sale 20%**

**Rs.
3,00,000/-
Per Month**

INCOME

- **Approximate Rs.1 to 3 Lac
Per Month**



FOR YOU

YOUR EVERYTHING STORE

Franchise Owened, Company Operated

FRANCHISE FOCO MODEL

OUTLET STORES



FOR YOU

YOUR EVERYTHING STORE

Franchise Owened, Company Operated

BEAR BY FRANCHISE

OTHER COMPANY

1000 sqft to 20000sqft

Rs.1,25,000/- + GST

Rs.30,000/- per Logins

Rs.2000/- per sqft+GST

Rs.1100/- per sqft +GST

Rs.400/- per sqft+GST

Set up cost Rs.3500/-+GST

5 YEARS

Company will refund 50% of the setup
cost after 5 years lockin period

1000 sqft to 10,000 sqft

Rs.2,75,000/- + GST

Rs.55,000/- per Logins

Rs.2400/- per sqft+GST

Rs.1200/- per sqft+GST

Rs.600/- per sqft+GST

Set up cost Rs.4200/-+GST

5 YEARS

Area/Size.....

Franchise Fee.....

Software Fee.....

Product Cost

Interior Cost.....

Operation Cost.....

Franchise Investment Cost Total.....

Agreement Time.....

COMPANY'S WORK

- Company will pay the rent of the store or upto Rupees 25 per sqft Maximum.
- Company will pay electricity bill of the Super Market Franchise.
- Company will pay salary of all staff working in Super Market Franchise.
- Company will bear all the operational and petty expenses.
- Company will do the marketing, promotion and advertisement of the supermarket franchise to boost up the sale in the store
- Company will display a wide range of saleable products in the store.
- Company will do the interior of the super market store.

CALCULATION OF INCOME : PROJECTION

Lets Take an example of
1000 sqft Area of FOCO
Model Franchise:

Per Month Approximate
Sales Rs.30 Lac (Per Day
Rs.100000 average Sale)

1.Income on total Monthly
sales 5% Commission
Rs.1,50,000/- Per Month

CALCULATION OF INCOME FROM FOCO MODEL

Company will pay 5%
commission on total monthly
sales generated in the same
supermarket franchise store

**Rs. 1,50,000/-
Per Month**

Refundable amount after 5
years lock in period

**Company will refund 50%
of the setup cost after 5
years lockin period**



FOR YOU

YOUR EVERYTHING STORE

THANK YOU

We love to help you live your dreams and appreciate your
interest in
joining the "FOR YOU" Family